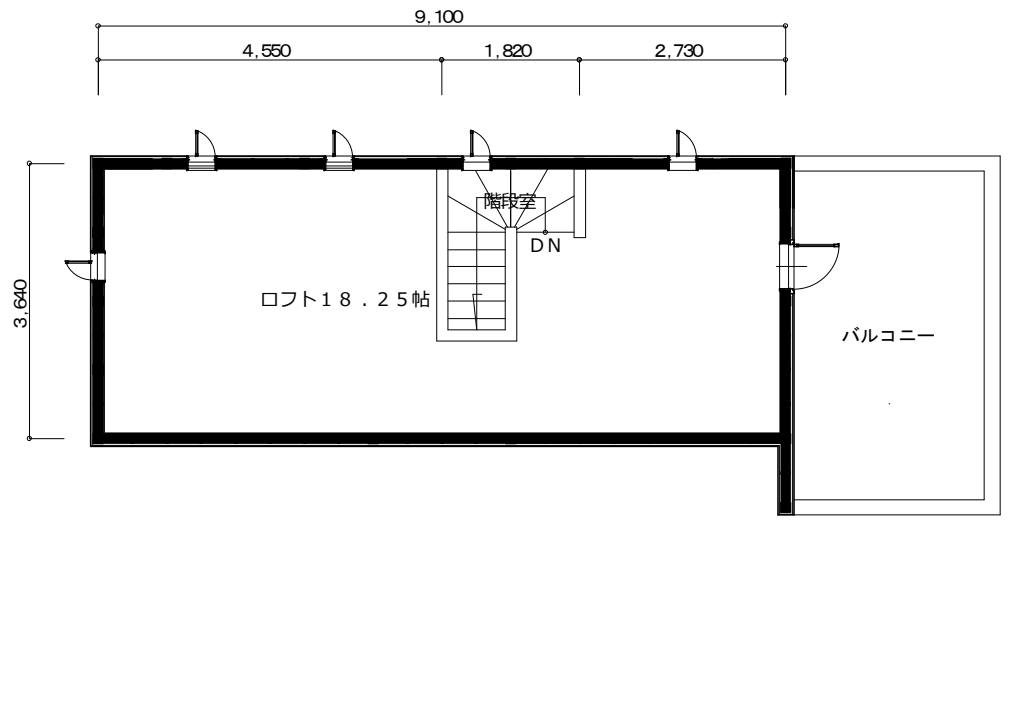


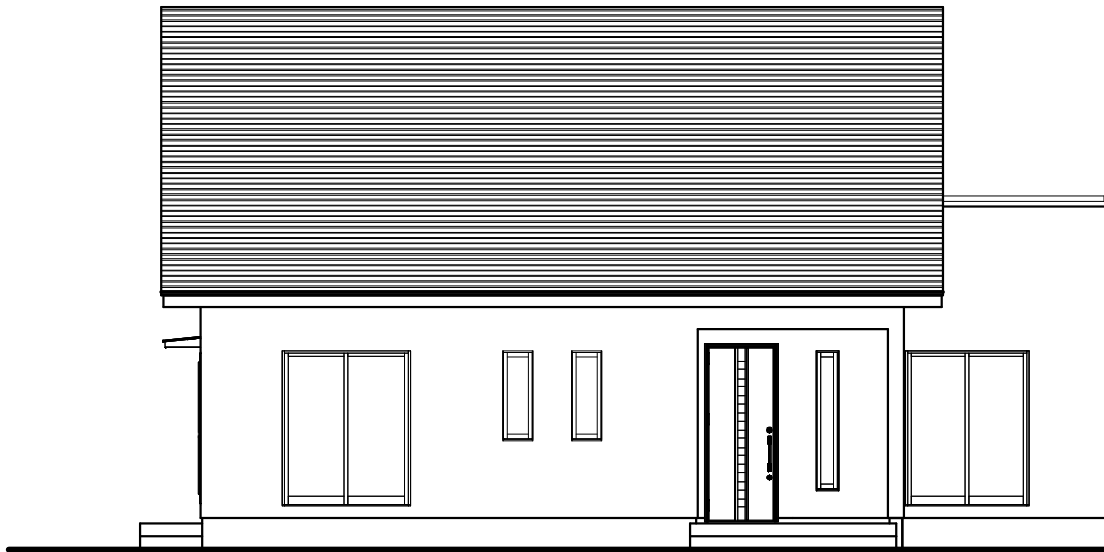
1 階平面図 S = 1 / 100



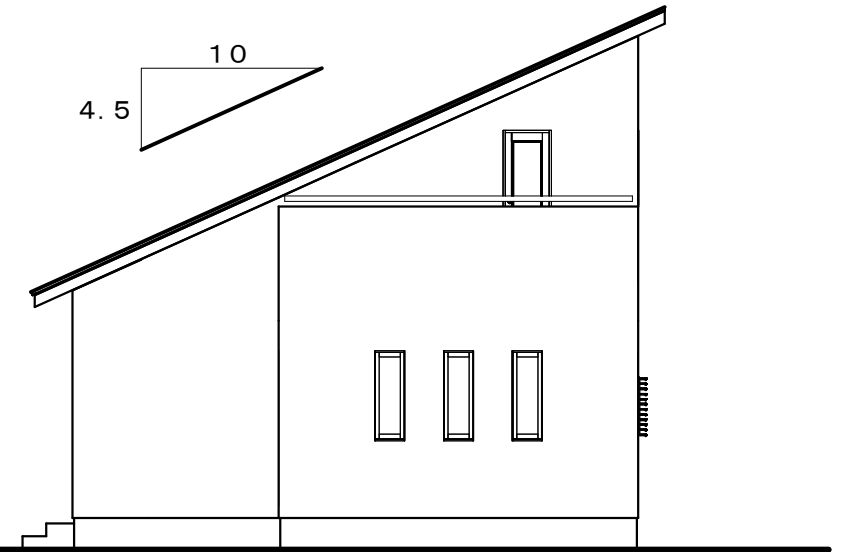
2 階平面図 S = 1 / 100

- 建築面積 78.66㎡ (23.79坪)
- 1階床面積 76.18㎡ (23.04坪)
- 2階床面積 33.12㎡ (10.02坪)
- 延床面積 109.30㎡ (33.06坪)

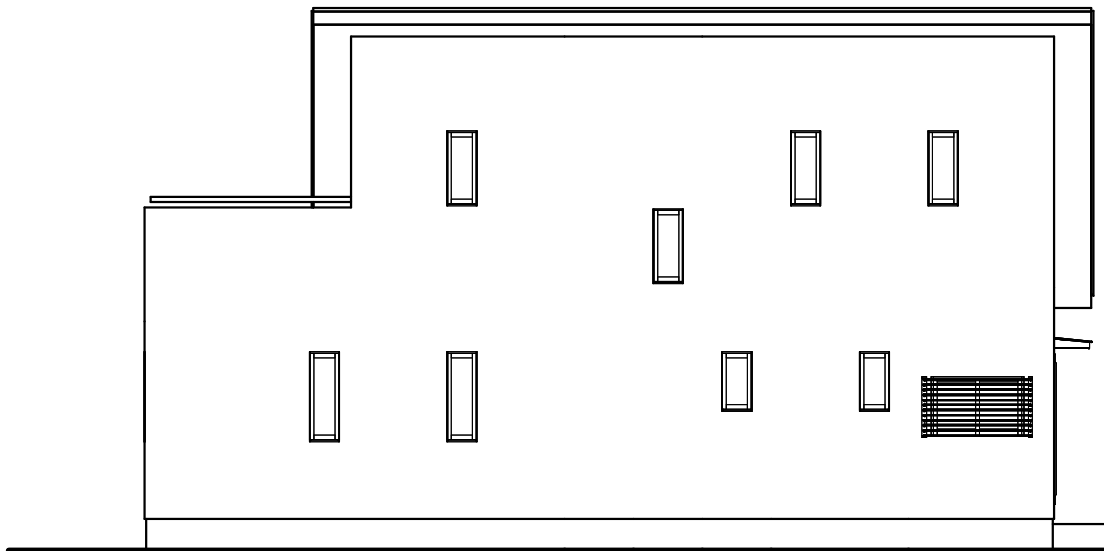




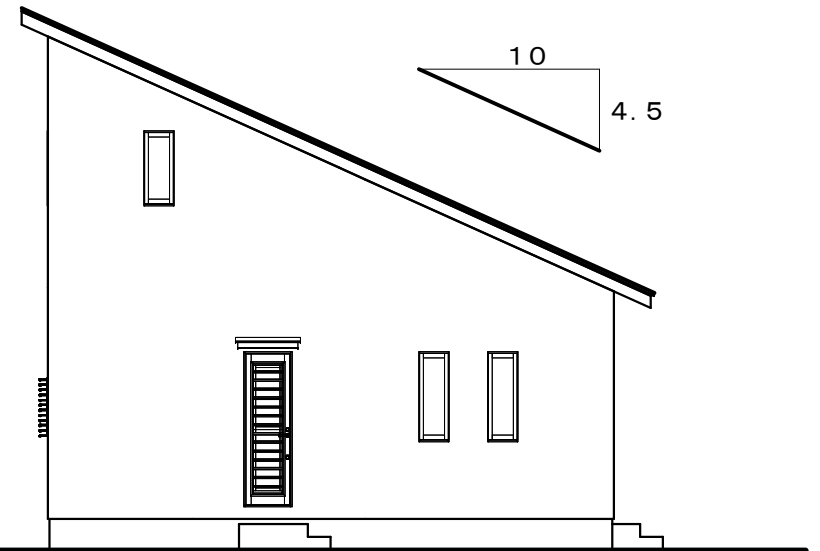
南面立面图 S=1/100



東面立面图 S=1/100



北面立面图 S=1/100



西面立面图 S=1/100